



The Old Fort Smith Circa 1830

UNIFIED PLANNING WORK PROGRAM

Fiscal Year 2010



Bi-State Metropolitan Planning Organization

Arkansas' Frontier MPO

This report was funded in part through grants from the Federal Highway Administration and the Federal Transit Administration, U.S. Department of Transportation. The views and opinions of the authors expressed herein do not necessarily state or reflect those of the U.S. Department of Transportation

June 18, 2009

Bi-State FY 2010 Unified Planning Work Program

*“Strategic planning is worthless -- unless there is first a strategic vision”
-John Naisbitt*

Prepared by:

Bi-State Metropolitan Planning Organization

In Cooperation With:

The following cities in Arkansas: Alma, Barling, Bonanza, Cedarville, Fort Smith, Greenwood, Kibler, Lavaca, Rudy, and Van Buren; and the following towns in Oklahoma: Arkoma, Moffett, Roland, and Spiro.

Also

Crawford and Sebastian Counties in Arkansas and LeFlore and Sequoyah Counties in Oklahoma.

And:

The Arkansas State Highway and Transportation Department

The Oklahoma Department of Transportation

The Federal Highway Administration

The Federal Transit Administration

Fort Smith Transit

Western Arkansas Planning and Development District

Eastern Oklahoma Development District

Kiamichi Economic Development District



www.bistatempo.org

June 18, 2009



BI-STATE MPO BOARD RESOLUTION

**ADOPTING THE
FISCAL YEAR 2010 UNIFIED PLANNING WORK PROGRAM (UPWP)
FOR THE
BI-STATE METROPOLITAN PLANNING ORGANIZATION (MPO)**

WHEREAS, the **Safe, Accountable, Flexible, Efficient Transportation Equity Act: A Legacy for Users (SAFETEA-LU)** requires transportation plans and programs for metropolitan areas be developed through a continuing, cooperative and comprehensive transportation planning process carried out by Bi-State MPO, (Bi-State), in concert with the state and transit operators; and

WHEREAS, Bi-State is the officially designated MPO for the Fort Smith/Van Buren metropolitan area in Arkansas and Oklahoma; and

WHEREAS, Bi-State's Fiscal Year (FY) 2010 Unified Planning Work Program, (UPWP), identifies the transportation planning activities to be undertaken in the Fort Smith/Van Buren metropolitan area during the FY 2010 UPWP beginning July 1, 2009 and ending June 30, 2010; and

WHEREAS, Bi-State's Technical Committee has reviewed the FY 2010 UPWP and recommends approval and adoption of the Document by Bi-State's Policy Board; and

WHEREAS, copies of Bi-State's FY 2010 UPWP have been made available for public comment on Bi-State's website and offices in accordance with Bi-State's Public Participation Plan (PPP),

NOW, THEREFORE, BE IT RESOLVED, that Bi-State Policy Board hereby approves and adopts Bi-State FY 2010 UPWP.

Adopted: June 18, 2009

Signed, June 18, 2009

David Hudson, Sebastian County Judge
Chairman, Bi-State Policy Board

Attest:

Signed, June 18, 2009

Ken O'Donnell, Director
Bi-State Metropolitan Planning Organization

Purpose of the Fiscal Year 2010 Unified Planning Work Program

The Bi-State Metropolitan Planning Organization, Bi-State, has prepared the FY 2010 UPWP, in accordance with the policies and requirements of Section 134 (a), Title 23 United States Code. The FY 2010 UPWP has been developed to encourage and promote the safe and efficient management, operation, and development of the Bi-State area's surface transportation system in order to serve the mobility needs of people and freight and foster economic growth and development. To accomplish these goals, Bi-State has designed a schedule of work tasks and a series of project studies and analysis that will advance the successful implementation of Bi-State's *Year 2030 Transportation and Mobility Plan* and an effective intermodal transportation system. The expected result of the successful completion of the activities proposed in the FY 2010 UPWP is an integrated and efficient multimodal transportation system for the Bi-State area that is an integral part of an intermodal transportation system for the States of Arkansas and Oklahoma and for the United States.

Bi-State Staff, in cooperation with the States of Arkansas and Oklahoma, and its member local governments developed the proposed activities in the FY 2010 UPWP to further the national transportation factors identified in the SAFETEA-LU, which was enacted in August 2005. Each work task or activity of the FY 2010 UPWP specifically addresses one or more of the following eight factors:

1. Support the economic vitality of the metropolitan area, especially by enabling global competitiveness, productivity, and efficiency;
2. Increase the safety of the transportation system for motorized and non-motorized users;
3. Increase the security of the transportation system for motorized and non-motorized users;
4. Increase the accessibility and mobility options for people and freight;
5. Protect and enhance the environment, promote energy conservation, improve quality of life, and promote the consistency between transportation improvements and State and local planned growth and economic patterns;
6. Enhance the integration and connectivity of the transportation system, across and between modes for people and freight;
7. Promote efficient system management and operation; and
8. Emphasize the preservation of the existing transportation system.

Each Work Task of the five (5) Elements of the FY 2010 Bi-State UPWP will indicate which of the eight (8) National Transportation factors the specific tasks address. One or more additional numbers in parentheses that will refer to the above numbered factors will follow the description of the Work Task.

Bi-State Metropolitan Planning Organization

Bi-State is a multi-city, multi-county, multi-state planning agency responsible for those transportation-planning activities in its geographical planning area that involve the use of Federal Highway Administration (FHWA) and Federal Transit Administration (FTA) funds in their implementation. Although the involvement of federal funding is a crucial element in defining its role and responsibilities, Bi-State has evolved into a regional planning agency that assists all of its member governments in most aspects of local and regional planning. This role was enhanced with the passage of The Intermodal Surface Transportation Efficiency Act of 1991- (ISTEA), when the requirements of regional transportation planning under Federal Program oversight were dramatically altered to reflect the need for transportation planning to consider other areas of regional planning activities and development and their impacts on transportation. The passage of the Transportation Equity Act for the 21st Century, (TEA-21) and SAFETEA-LU which was enacted in August 2005 continued this requirement for integration of local and regional planning with Bi-State transportation planning activities. Effective transportation planning must take into consideration the social, economic, and environmental impacts of each transportation decision that is reached. It must also be positioned to offer effective and workable alternatives to decisions that are seen as burdening one group of people at the sake of another. This has been an expressed policy of Bi-State for many years in its planning and implementation activities.

Environmental Justice Procedures

Pursuant to Executive Order 12898, Federal Actions to Address Environmental Justice in Minority Populations and Low-Income Populations (Environmental Justice), dated February 11, 1994 and the subsequent U.S. Department of Transportation Order 5680.3, issued April 15, 1997, Bi-State has adopted a policy promoting Environmental Justice in all aspects of Bi-State's transportation planning process. These procedures augment and reaffirm Bi-State's policy and practice to adhere to and advance the principles of the National Environmental Policy Act of 1969 (NEPA), Title VI of the Civil Rights Act of 1964 (Title VI), the Uniform Relocation Assistance and Real Property Acquisition Policies Act of 1970 as amended (Uniform Act), Title II of the Americans with Disabilities Act of 1990, and Section 504 of the Rehabilitation Act of 1973, *the ISTEA, The TEA-21* and, the *SAFETEA-LU* and other statutes, regulations and guidance that address or affect transportation planning and decision making; social, economic, or environmental matters; public health; and public involvement.

These procedures are integrated with the *Bi-State's PPP* to foster and implement meaningful opportunities for public involvement by members of minority populations, persons with limited English proficiencies, low-income and historically underserved populations during the planning and development of programs, policies, and activities including the identification of potential impacts, alternatives, and mitigation measures. The procedures also provide the public, including minority populations, persons with limited English proficiencies, low-income and other underserved populations, access to public information concerning the human health or environmental impacts of transportation projects, programs, policies, and activities.

Bi-State will follow the *PPP* to avoid situations where one part of the community accrues benefits while other parts of the community bear a disproportionate burden and pay the cost of diminished environment. Transportation equity strives to provide access, opportunity, and fairness in all transportation related matters to all members of society. Bi-State recognizes that adequate and efficient transportation is a critical factor in addressing poverty, unemployment, and equal opportunity goals, and in providing equal access to education, employment, and other essential public services

Fiscal Year 2010 UWP Planning Activities

The FY 2010 Bi-State UPWP is divided into five general Elements. Each Element contains the proposed planning activities, schedules for activity completion, responsible party for conducting the work, participating agencies and jurisdictions, anticipated work products, and the budgeted costs for each Element. The five Elements are: **100- Data Management and Maintenance, 200 - Local Planning Coordination, 300- 2030 Plan Implementation, 400- Bi-State Administration, and 500- Special Regional Projects.** There are also four tables presented in the FY 2010 UPWP. The first table, FY 2010 UPWP Arkansas PL Funding Summary presents the Federal PL funds and the Local matching funds for transportation planning in the Bi-State area. The second table, FY 2010 UPWP Oklahoma PL Funding Summary, presents the PL funds for transportation planning activities within the Bi-State area. The third table, FY 2010 UPWP Funding Summary presents the total Federal PL funds provided for both States and the Local match for these funds, The fourth Table presents the summary of the Arkansas and Oklahoma Federally provided State Planning and Research (SPR) Funds for use by the respective States' Departments of Transportation for transportation planning purposes within the Bi-State area. Each of these tables is structured to identify the funding and the source of funding by Program Element.

Bi-State Title VI Assurance Policy and Statement

Bi-State, hereby gives assurances that no person shall, on the grounds or race, color, national origin, sex, age, and handicap/disability, be excluded from participation in, be denied the benefits of, or be otherwise subjected to discrimination under any program or activity conducted by Bi-State regardless of whether those programs and activities are federally-funded or not. Activities and programs which Bi-State hereby agrees to carry out in compliance with Title VI and related statutes include but are not limited to planning programs and other grant programs of the FHWA, FTA, and all other Departments and or Administrations of the US Department of Transportation.

Projects from the FY 2009 UPWP Continued into FY 2010

The following Work Tasks from the FY 2009 UPWP will be continued into FY 2010.

Element 100 Data Management and Maintenance

Arkansas: Tasks 1 & 2

1. Monitor the building activities in Crawford and Sebastian Counties and prepare reports for the prior calendar year regarding construction activity and property development. (1,2,3,8)
2. Enhance and maintain Bi-State's Geographic Information System technical capabilities as they relate to the transportation planning process and the preparation of graphic and demographic materials.
(1,2,3,4,5,6,7,8)

Oklahoma: Tasks 1

1. Enhance and maintain Bi-State's GIS technical capabilities as they relate to the transportation planning process and the preparation of graphic and demographic materials.
(1,2,3,4,5,6,7,8)

Element 200 Local Planning Coordination

Arkansas: Task 2

2. Assist the City of Fort Smith in transportation/access improvements that will be necessary in the establishment of the US Marshals Museum. (1,2,3,4,5,6,8)

Element 300 Bi-State 2020 Transportation Plan Implementation

Arkansas: Tasks 5

5. Provide technical assistance to the City of Van Buren and private sector stakeholders and transportation providers in implementation of the Van Buren Intermodal Facility.
(1,2,3,4,5,6,7,8)

Element 400 Bi-State Program Administration

Arkansas/Oklahoma Task 6

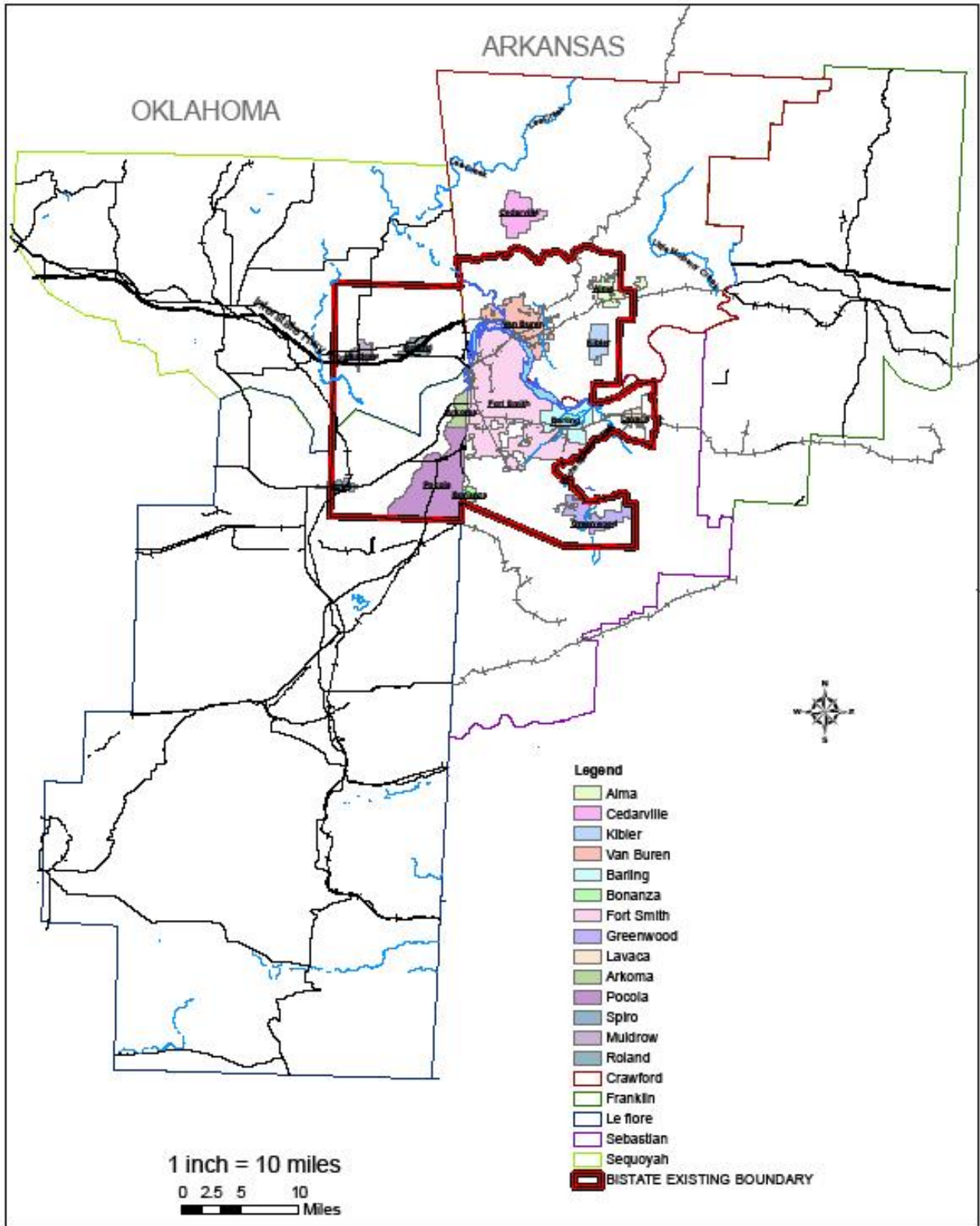
6. Improve and advance Bi-State's PPP through the enhancement of Bi-State's website and other visualization activities. (1,2,3,4,5,6,7,8)

Element 500 Special Studies and Projects

Arkansas/Oklahoma Tasks: 2,

2. Support the Fort Smith Transit Department and the Fort Smith Information Technology Department in developing Bi-State area-wide Advanced Travelers Information System.
(1,2,3,4,5,6,7,8)

EXISTING BI-STATE MPO BOUNDARY AREA



Fiscal Year 2010 Unified Planning Work Program

Element 100 Data Management and Maintenance

“A hundred years after we are gone and forgotten, those who never heard of us will be living with the results of our actions.”

- Oliver Wendell Homes

Work Tasks



Arkansas

1. Monitor building activities in Crawford and Sebastian Counties by collating building permit data Bi-State receives from utilities and member jurisdictions operating building permit programs. The receipt of this information is a regular part of Bi-State’s work to update and maintain 911 programs in Crawford and Sebastian Counties. WAPDD, the parent and fiscal agency of Bi-State, will provide the technical support in monitoring of building activities through its GIS function. Prepare an annual report for the prior calendar year regarding the building activity. (1,3,4,5,6,8)

Responsible Agency: Bi-State

Roles of Cooperating Agencies: Utilities and Crawford and Sebastian County cities will provide the building permit data and the WAPDD GIS department will update Counties’ and local jurisdictions’ base maps.

2. Maintain Bi-State’s GIS technical capabilities as they relate to the transportation planning process and the preparation of graphic and demographic materials. (1,4,6,8)

Responsible Agency: Bi-State

Roles of Cooperating Agencies: Technical Support will be provided by consultants, trainers, and facilitators, as necessary, to maintain and enhance Bi-State’s GIS capabilities.

3. Develop and publish Bi-State’s area wide Annual List of Obligated Projects. (4,5,6,8)

Responsible Agencies: Bi-State, Arkansas Highway and Transportation Department (AHTD), Fort Smith Transit, Member Governments of the Bi-State

Roles of Cooperating Agencies: AHTD, Fort Smith Transit and member governments will provide information from their files, including detail regarding regionally significant local projects, necessary for Bi-State to prepare the Annual List of Obligated Projects.

4. Monitor Census Bureau through Arkansas Census State Data Center (CSDC), on-line assistance and information programs, webinars, and other offerings that relate to census data and reports regarding the 2010 decennial census. Bi-State Staff will participate in Census, CSDC, FHWA, FTA, and AHTD on-line programs and, where appropriate

workshops and seminars in anticipation of the preparation and receipt of Census Transportation Planning Package (CTPP) data. (1,4,5,6,8)

Responsible Agency: Bi-State

Roles of Cooperating Agencies: Periodic newsletters, census information and related training will be provided by Arkansas's Census State Data Center (CSDC), the official representative of the U. S. Bureau of the Census in Arkansas. The national State Data Center Program is a partnership between each state and the Census Bureau. The Arkansas lead agency is located in the Institute for Economic Advancement, College of Business, University of Arkansas at Little Rock and it serves as a liaison between the Washington headquarters, the Kansas City Regional Office, and state and local governmental officials. The CSDC assists the Census Bureau in promoting the decennial census but its main responsibility is one of dissemination.

5. Update Bi-State's Functional Classification Map to comply with new FHWA Guidelines. (1,2,3,4,5,6,7,8)

Responsible Agencies: Bi-State MPO, Bi-State Member City and County Governments and AHTD

Roles of Cooperating Agencies: Bi-State Staff will support local governments in cooperation with AHTD in generation of Functional Classification Maps which comply with new FHWA unified Functional Classification Map requirements.

Oklahoma

1. Maintain Bi-State's GIS technical capabilities as they relate to the transportation planning process and the preparation of graphic and demographic materials. (1,4,5,6,8)

Responsible Agency: Bi-State

Roles of Cooperating Agencies: Technical Support will be provided by consultants, trainers, and facilitators, as necessary, to maintain and enhance the Bi-State's GIS capabilities.

2. Develop and publish the Bi-State area wide Annual List of Obligated Projects. (4,5,6,8)

Responsible Agencies: Bi-State MPO, Oklahoma Department of Transportation (ODOT), Member Governments of the Bi-State

Roles of Cooperating Agencies: ODOT will provide information from its files and local governments will provide additional detail regarding regionally significant local projects necessary for Bi-State to prepare the Annual List of Obligated Projects.

3. Monitor Census Bureau through Oklahoma Department of Commerce (ODOC), on-line assistance and informational programs, webinars, and other offerings that relate to census data and reports regarding the 2010 decennial census. Staff will participate in Census, ODOC, FHWA, FTA, and ODOT on-line programs and, where appropriate, workshops

and seminars in anticipation of the preparation and receipt of Census Transportation Planning Package (CTPP) data. (1,4,5,6,8)

Responsible Agency: Bi-State

Roles of Cooperating Agencies: Periodic newsletters, census information and related training will be provided by The Oklahoma Department of Commerce (ODOC), the official representative of the U. S. Bureau of the Census in Oklahoma. The national State Data Center Program is a partnership between each state and the Census Bureau. As the state data center, Commerce receives a constant flow of U.S. Census Bureau statistics and data pertaining specifically to Oklahoma and organized into county and city subcategories. National statistics and data are also available. ODOC also regularly receives information from the Bureau of Economic Analysis, the Bureau of Labor Statistics, the U.S. Department of Agriculture, and the Oklahoma Employment Security Commission. ODOC serves as a liaison between the Washington headquarters, the Kansas City Regional Office, and state and local governmental officials. The ODOC assists the Census Bureau in promoting the decennial census but its main responsibility is one of dissemination.

Participating Parties

Bi-State Staff
Crawford and Sebastian Counties
Bi-State Member Cities and Counties
Eastern Oklahoma Development District
Kiamichi Economic Development District
Western Arkansas Planning and Development District
AHTD
ODOT
Fort Smith Transit
Arkansas's Census State Data Center
Oklahoma Department of Commerce

Products

Copies of monthly progress reports submitted to the AHTD will be forwarded to the ODOT as will the quarterly reports submitted to ODOT be forwarded to AHTD. Copies of resolutions, public hearing notices and meeting minutes will be submitted to AHTD and ODOT within 30 days, or sooner, as required.

Arkansas

1. Periodic (in conjunction with funding requests) and Annual Report of the building activities within the Bi-State area of Crawford and Sebastian Counties in Arkansas provided to AHTD. The Annual report will also be placed on Bi-State's website.
2. An improved Bi-State area GIS mapping platform with an interactive mapping function for the Bi-State area. This platform will also be used as the platform for the Advanced Traveler's Information System. This improved GIS mapping platform will enable Bi-State to develop a traffic crash-recording program for the jurisdictions in Bi-State. These

mapping enhancements will also allow Bi-State to locate and depict project information for the Transportation Improvement Program during scheduled updates and in conjunction with proposed amendments. The mapping program will become an integral element of Bi-State's improved visualization efforts.

3. Published Annual List of Obligated Projects
4. Provide census related assistance to the members of Bi-State upon request. Provide quarterly reports and annual summary report to AHTD listing the CTPP educational programs attended by Bi-State staff and quantifying requests for data and Bi-State's actions to fulfill requests.
5. Updated Bi-State Functional Classification Map.

Oklahoma

1. An improved Bi-State area GIS mapping platform with an interactive mapping function for the Bi-State area. This platform will also be used as the platform for the Advanced Traveler's Information System. This improved GIS mapping platform will enable Bi-State to develop a traffic crash-recording program for member jurisdictions. These mapping enhancements will also allow the Bi-State to locate and depict project information for the TIP during scheduled updates and in conjunction with proposed amendments. The mapping program will become an integral element of the Bi-State's improved visualization efforts.
2. Published Annual List of Obligated Projects.
3. Provide census related assistance to the members of Bi-State upon request. Provide quarterly reports and annual summary report to ODOT listing the CTPP educational programs attended by Bi-State staff and quantifying requests for data and Bi-State's actions to fulfill requests.

Completion Dates

Arkansas

1. June 2010 Progress reports generated in conjunction with funding requests.
2. June 2010
3. Dec 2009
4. June 2010 Progress reports generated in conjunction with funding requests.
5. Nov 2009

Oklahoma

1. June 2010 Progress reports generated in conjunction with funding requests.

2. Dec 2009
3. June 2010 Progress reports generated in conjunction with funding requests.

Cost Data

<u>Arkansas PL (9.7% of Budget)</u>		<u>Oklahoma PL (10% of Budget)</u>	
Federal	\$ 23,996		\$ 2,390
Local	<u>5,999</u>		<u>598</u>
Total	\$ 29,995		\$ 2,988

Element 200 Local Planning Coordination

“Small opportunities are often the beginning of great enterprises.”
- Demosthenes

Work Tasks



Arkansas/ Oklahoma

1. Respond to requests for assistance from Bi-State member governments, public entities, and other not-for-profit organizations regarding planning activities within the Bi-State area. (1,2,3,4,5,6,7,8)

Responsible Agency: Bi-State MPO

Roles of Cooperating Agencies: Regional coordination by Bi-State in provision of information, including planning data, and other information as required.

2. Support each jurisdiction in the Bi-State area in the implementation of the elements of the *Bi-State’s Year 2030 Transportation and Mobility Plan*, including transit, safety, non-motorized (bike, pedestrian, and trails), and ITS deployments. (1,2,3,4,5,6,7,8)

Responsible Agency: Bi-State

Roles of Cooperating Agencies: Bi-State will coordinate *Bi-State’s Year 2030 Transportation and Mobility Plan* implementation activities with local government and non-governmental agencies to achieve desired outcomes and ensure program success.

Participating Parties

Bi-State Staff

Bi-State Member Cities and Counties

Regional non-profit organizations

Fort Smith Transit

Fort Smith Advertising and Promotion Commission

Van Buren Advertising and Promotion Commission

AARP

MPO Region-wide School Districts

The Chambers of Commerce in the Arkansas portion of the Bi-State Area

The Chambers of Commerce in the Oklahoma portion of the Bi-State Area

The Manufactures Executive Association

Products

Copies of monthly progress reports submitted to the AHTD will be forwarded to the ODOT as will the quarterly reports submitted to ODOT be forwarded to AHTD. Copies of resolutions, public hearing notices and meeting minutes will be submitted to AHTD and ODOT within 30 days, or sooner, as required.

Arkansas/ Oklahoma

1. Planning reports, maps, and documents for Bi-State member jurisdictions and not-for-profit organizations as requested by the member jurisdictions and eligible organizations. Provide progress reports generated in conjunction with funding requests to AHTD and ODOT detailing the reports, maps and documents that were produced by Bi-State.
2. Local transportation management and operational improvements that support the 7 transportation management systems outlined in the *Bi-State Year 2030 Transportation and Mobility Plan*. Reports, papers, and other informational materials will be produced that address safety management systems regarding the coordination of safety programs designed for teen-age drivers, motorcycle safety training, and the establishment of a “culture of safety” within the region. In addition to these products, the MPO will also develop specific strategies to enhance the region’s freight movements and expand the modal opportunities available to the region’s shippers. Collectively, these improvements will advance the implementation of the *Bi-State Year 2030 Transportation and Mobility Plan*

Completion Dates

Arkansas/ Oklahoma

1. June 2010 Progress reports generated in conjunction with funding requests.
2. June 2010 Progress reports generated in conjunction with funding requests.

Cost Data

	<u>Arkansas PL (14.6% of Budget)</u>	<u>Oklahoma PL (15% of Budget)</u>
Federal	\$ 35,994	\$ 3,585
Local	<u>8,998</u>	<u>895</u>
Total	\$ 44,992	\$ 4,480

Element 300

Bi-State Year 2030 Transportation and Mobility Plan

“Work for something because it is good, not just because it stands a chance to succeed.”
- Vaclav Havel

Work Tasks



Arkansas

1. Implement the transportation management elements of the *Bi-State Year 2030 Transportation and Mobility Plan*. In FY 2010 Bi-State will focus on further implementation of the transit management, safety management, Intelligent Transportation Systems (ITS) management, and freight management elements developed in prior years. Programs proposed for development in FY 2010 include a traffic management function in Van Buren and Fort Smith, and a non-motorized transportation program for the region. (1,2,3,4,5,6,7,8)

Responsible Agency: Bi-State

Roles of Cooperating Agencies: Bi-State will coordinate implementation activities with local government, non-governmental agencies and industry representatives to achieve desired outcomes and ensure program success.

2. Prepare and adopt the FY 2010 – 2013 Transportation Improvement Program TIP. (1,2,3,4,5,6,7,8)

Responsible Agency: Bi-State

Roles of Cooperating Agencies: AHTD and Fort Smith Transit will provide data to Bi-State Staff necessary in the preparation of the TIP. Bi-State will lead a region wide cooperative and comprehensive decision-making process in the selection of projects for inclusion in the TIP.

3. Provide technical support to Bi-State member law enforcements agencies and school districts in development of educational and informational materials and programs aimed at residents and junior high and high school students. Topics will include the primary Seat Belt Law, Graduated License Law, and other transportation safety related legislation enacted during the 2009 Arkansas Legislative Session. (2,3,5,7)

Responsible Agency: Bi-State

Roles of Cooperating Agencies: Preparation of brochures and other materials to be used in the completion of this Task will be by partner agencies. These agencies will also facilitate access to students/citizens and participate in roll-out of programs and materials.

4. Implement the *Bi-State Coordinated Human Services/Public Transit Plan*, providing joint management, with the Fort Smith Transit Department, of the Mobility Manager contracted from the University of Arkansas Fort Smith. (1,2,4,5,6,7,)

Responsible Agencies: Bi-State, Fort Smith Transit Department

Roles of Cooperating Agencies: Grant management, Meeting space, route information, and the participation of River Valley Providers in coordinating implementation.

5. Provide technical assistance to the City of Van Buren, private sector stakeholders and transportation providers in the implementation of the Van Buren Intermodal Facility. (1,2,3,4,5,6,7,8)

Responsible Agency: Bi-State

Roles of Cooperating Agencies: Technical Support from the AHTD and other agencies relative to freight information and programming of transportation projects. Bi-State MPO will provide the following support services: best practices research regarding the operations of other similar facilities within the region and nation; preparation of documents necessary in development of an administrative structure for an Authority and related facilities; preparation of project specific cost data, phases, and implementation strategies; and, overall facilitation of the establishment of administrative responsibilities of the regional intermodal authority. It is envisioned that the types of requests for assistance from the partners will define their specific roles in this task. At a minimum, it would be expected that the participating partners in this task will provide timely information, technical assistance such as preliminary engineering recommendations, and other appropriate supportive materials and products.

6. Monitor and amend the *Bi-State Year 2030 Transportation and Mobility Plan* as necessary. (1,2,3,4,5,6,7,8)

Responsible Agency: Bi-State

Roles of Cooperating Agencies: Comprehensive regional coordination by Bi-State in collection of information from local units of government and other partner agencies to identify any required amendment.

7. Create timeline and gather data necessary to initiate a plan development process for the *Bi-State Year 2035 Transportation and Mobility Plan*. Staff will gather inventory data relating to the seven management systems identified in the current 2030 Plan. Staff will also create and implement a timeline and begin conducting meetings with transportation users and providers, creating on-line surveys that will be placed on Bi-State's website, and meeting with local chief elected officials to identify improvement priorities and suggestions for system enhancements. (1,2,3,4,5,6,7,8)

Responsible Agency: Bi-State

Roles of Cooperating Agencies: Comprehensive regional coordination by Bi-State in scheduling and collection of information, including planning data, and other information as required.

Oklahoma

1. Implement the transportation management elements of the *Bi-State Year 2030 Transportation and Mobility Plan*. In FY 2010 Bi-State will focus on further implementation of the transit management, safety management, ITS management, and freight management elements developed in prior years. Programs proposed for development in FY 2010 include a non-motorized transportation program for the region. (1,2,3,4,5,6,7,8)

Responsible Agency: Bi-State

Roles of Cooperating Agencies: Bi-State will coordinate implementation activities with local government and non-governmental agencies to achieve desired outcomes and ensure program success.

2. Prepare and adopt the FY 2010 – 2013 TIP. (1,2,3,4,5,6,7,8)

Responsible Agency: Bi-State

Roles of Cooperating Agencies: ODOT will provide data to Bi-State Staff necessary in the preparation of the TIP. Bi-State will lead a cooperative and comprehensive decision-making process in the selection of projects for inclusion in the TIP.

3. Monitor and amend the *Bi-State Year 2030 Transportation and Mobility Plan* as necessary. (1,2,3,4,5,6,7,8)

Responsible Agency: Bi-State

Roles of Cooperating Agencies: Comprehensive regional coordination by Bi-State in collection of information from local units of government and other partner agencies to identify and quantify any required amendment.

4. Create timeline and gather data necessary to initiate a plan development process for *Bi-State Year 2035 Transportation and Mobility Plan*. Staff will gather inventory data relating to the seven management systems identified in the current 2030 Plan. Staff will also create and implement a timeline and begin conducting meetings with transportation users and providers, creating on-line surveys that will be placed on Bi-State's website, and meeting with local chief elected officials to identify improvement priorities and suggestions for system enhancements. (1,2,3,4,5,6,7,8)

Responsible Agency: Bi-State

Roles of Cooperating Agencies: Comprehensive regional coordination by Bi-State in scheduling and collection of information, including planning data, and other information as required.

Participating Parties

Bi-State Staff
Bi-State Member Cities and Counties
Fort Smith Transit Department
Arkansas State Police

Arkansas Highway Safety Office
AARP
Van Buren Public Facility Board
AHTD
ODOT
Private port terminal operators
Private Carriers
Local Chambers of Commerce

Products

Copies of monthly progress reports submitted to the AHTD will be forwarded to the ODOT as will the quarterly reports submitted to ODOT be forwarded to AHTD. Copies of resolutions, public hearing notices and meeting minutes will be submitted to AHTD and ODOT within 30 days, or sooner, as required.

Arkansas

1. Provide a summary of activities engaged in to implement elements of the Bi-State Year 2030 Transportation and Mobility Plan. Summarize and/or map the activities associated with the traffic management and non-motorized transportation programs.
2. Adopt the FY 2010-2013 TIP.
3. Educational materials, advertisements, press releases and other informational brochures and documents relative to the transportation and traffic safety laws enacted during the 2009 Arkansas General Assembly. These materials will be produced and distributed in cooperation with local law enforcement agencies, school districts, and the Bi-State area state legislative delegation.
4. Delivery of the Mobility Manager's Handbook and a summary of Mobility Management activities.
5. Technical assistance to Bi-State area local governments and non-governmental agencies to establish a regional intermodal authority and continued assistance to the City of Van Buren and private carriers in the pursuit of intermodal activities at the port of Van Buren.
6. ***Bi-State Year 2030 Transportation and Mobility Plan*** maintained current through amendment as necessary. Resolutions documenting amendments provided to Policy and Technical Committees and AHTD within 30 days of action or sooner as required.
7. Outline and schedule detailing the process Bi-State staff will follow in establishing and initiating a plan development process for the ***Bi-State Year 2035 Transportation and Mobility Plan***.

Oklahoma

1. Describe the work product and the mechanisms necessary to implement the transportation related management systems.

2. Adopt the FY 2010-2013 TIP
3. *Bi-State Year 2030 Transportation and Mobility Plan* maintained current through amendment as necessary. Resolutions documenting amendments provided to Policy and Technical Committees and ODOT within 30 days of action or sooner as required.
4. Outline and schedule detailing the process Bi-State staff will follow in establishing and initiating a plan development process for the *Bi-State Year 2035 Transportation and Mobility Plan*.

Completion Dates

Arkansas

1. June 2010 Progress reports generated in conjunction with funding requests.
2. Aug 2009
3. June 2010 Progress reports generated in conjunction with funding requests.
4. June 2010 Progress reports generated in conjunction with funding requests.
5. June 2010 Progress reports generated in conjunction with funding requests.
6. June 2010 Progress reports generated in conjunction with funding requests.
7. June 2010 Progress reports generated in conjunction with funding requests.

Oklahoma

1. June 2010 Progress reports generated in conjunction with funding requests.
2. Aug 2009
3. June 2010 Progress reports generated in conjunction with funding requests.
4. June 2010 Progress reports generated in conjunction with funding requests.

Cost Data

	<u>Arkansas PL (39% of Budget)</u>	<u>Oklahoma PL (40% of Budget)</u>
Federal	\$ 95,982	\$ 9,560
Local	<u>23,996</u>	<u>2,390</u>
Total	\$119,978	\$11,950

Element 400 Bi-State Program Administration

“The secret of success is constancy to purpose.”
- Benjamin Disraeli

Work Tasks



Arkansas/Oklahoma

1. Administer the Bi-State Planning program and implement any necessary and appropriate changes to planning activities that may result from program requirements contained in SAFETEA-LU and subsequent legislation. (1,2,3,4,5,6,7,8)

Responsible Agency: Bi-State

Roles of Cooperating Agencies: Comprehensive participation of Bi-State member agencies and partners in the cooperative and continuing process of operating Bi-State’s program.

2. Maintain currency in transportation planning best practices through electronic resources, conferences, seminars and workshops, including participation in Arkansas Association of Metropolitan Planning Organizations (AAMPO) meetings and events. Staff will also work with the GIS Consortium through AAMPO. (1,2,3,4,5,6,7)

Responsible Agency: Bi-State

Roles of Cooperating Agencies: Monitor information sources and participate in information exchange where appropriate to maintain currency. Disseminate information gleaned in this process within the Bi-State Area and across partner agencies to the greatest extent possible.

3. Prepare and process proposed amendments to the *Bi-State 2010 – 2013 TIP*. These activities will be governed by the requirements of the *Bi-State Public Participation Plan*. (1,2,3,4,8)

Responsible Agencies: Bi-State, Ft Smith Transit, AHTD, ODOT

Roles of Cooperating Agencies: Bi-State will engage in a cooperative, comprehensive and continuous process of engagement within the Bi-State Area and with partner agencies outside the service area to ensure that planning documents reflect current information and goals of Bi-State and comply with limitations of its funding sources.

4. Prepare the FY 2011 UPWP in cooperation with the transit provider(s), AHTD and ODOT. (1,2,3,4,5,6,7,8)

Responsible Agency: Bi-State, Ft Smith Transit, AHTD, ODOT

Roles of Cooperating Agencies: Bi-State will engage in a cooperative, comprehensive and continuous process of engagement within the Bi-State Area and with partner agencies

outside the service area to ensure that planning documents reflect current information and goals of Bi-State and comply with limitations of its funding sources.

5. Improve and advance Bi-State **PPP** through the enhancement of Bi-State's website, and development of educational/documentation materials and other visualization activities. Review the content and effectiveness of information on Bi-State's website. Provide a report to the Technical Committee and Policy Board on the effectiveness of the PPP and the website. Prepare updates or revisions to the PPP based upon the outcome of this review and evaluation. (1,2,3,4,5,6,7,8)

Responsible Agency: Bi-State

Roles of Cooperating Agencies: Member agencies will participate in training opportunities and offer other supports to improve Bi-State's public involvement process. AHTD, ODOT and other partners will share best practices information, and offer other supports as necessary to support Bi-State in this effort.

6. Engage member agencies and coordinate Technical Committee and Policy Board member participation in training and other group activities to improve their collective understanding of and participation in the Transportation Planning process in compliance with Open Meetings requirements. Provide technical assistance and training to the Committees on their roles and responsibilities. Secure assistance from AHTD, ODOT, FHWA and FTA as necessary. Provide draft meeting minutes to ODOT and AHTD within 30 days of all public meetings. (1,2,3,4,5,6,7,8)

Responsible Agency: Bi-State

Roles of Cooperating Agencies: Member agencies will ensure that current contact information for agency representatives is provided to Bi-State and make agency representatives available for participation in group exercises and meetings as necessary. AHTD, ODOT, FHWA and FTA will support Bi-State in conduct of trainings and facilitate other exercises to insure a high level of awareness, understanding and participation by committee members.

7. Research and prepare a transportation planning administration policy and procedures manual. Coordinate activity with AHTD and ODOT with support from FHWA and FTA. Adjust current policy/procedures and amend by-laws, as necessary, to ensure that program operations conform to Open Meeting and other requirements. Provide copies of the manual to member agencies and conduct workshops with Bi-State's staff, Technical Committee and Policy Board members to increase the collective understanding of member agency roles and responsibilities, and ensure ongoing compliance with minimum standards of performance. Share the finished product with other MPOs as a template. (1,2,3,4,5,6,7,8)

Responsible Agencies: Bi-State

Roles of Cooperating Agencies: Cooperative assistance in the preparation of the Manual will be provided by AHTD, ODOT, FHWA, FTA and MPO member governments. AHTD will provide Technical Assistance in creating product formats and conducting activities to

document relationships and processes. Review of document drafts will be coordinated between agencies to capture detail at the local, state and federal level.

Participating Parties

Bi-State Staff
Bi-State Member Cities and Counties
Arkansas/Oklahoma based MPOs
Fort Smith Transit Department
AHTD
ODOT
FHWA
FTA

Products

Copies of monthly progress reports submitted to the AHTD will be forwarded to ODOT as will the quarterly reports submitted to ODOT be forwarded to AHTD. Copies of resolutions, public hearing notices and meeting minutes will be submitted to AHTD and ODOT within 30 days, or sooner, as required.

Arkansas/Oklahoma

1. Submit claims reports to AHTD and ODOT. Notice, develop agenda, conduct meetings and produce meeting minutes. Maintain notices and documents as current on web page.
2. An informed planning process that incorporates current science and best practices examples gleaned through media review and participation in training activities. Periodic reports provided to AHTD and ODOT will summarize activities and report benefits to the transportation planning process.
3. All amendments to Bi-State's **TIP** executed in accordance with AHTD, ODOT, FHWA and FTA requirements, and Bi-State's **PPP**.
4. Adoption of the FY 2011 UPWP in accordance with AHTD, ODOT, FHWA, FTA requirements and Bi-State's **PPP**.
5. The Bi-State **PPP** maintained as current, with updates or revisions incorporated into the operating document based upon the product of the review process.
6. Trainings, technical support and other group activities conducted with partner agencies focused on the Transportation Planning Process and the roles of the participants in support of Bi-State. Bi-State Policy Board meetings and Technical Committee meetings convened separately and in accordance with the Open Meeting Acts of Arkansas and Oklahoma. Delivery of draft meeting minutes to ODOT and AHTD within 30 days of all public meetings.
7. A transportation planning administrative policy and procedures manual that informs participants and guides the actions of Bi-State. Current policy/practices and Bi-State by-

laws amended, as necessary, to ensure program operational conformance with Open Meeting and other requirements. Copies of the manual provided to member agencies. Workshops conducted with Bi-State’s staff, Technical Committee and Policy Board members to increase the collective understanding of member agency roles and responsibilities, and ensure Bi-State’s ongoing compliance with minimum standards of performance. The finished product provided to other MPOs as a template for their use.

Completion Dates

Arkansas/Oklahoma

1. June 2010 Progress reports generated in conjunction with funding requests.
2. June 2010 Progress reports generated in conjunction with funding requests.
3. June 2010 Progress reports generated in conjunction with funding requests.
4. April 2010 Progress reports generated in conjunction with funding requests.
5. June 2010 Progress reports generated in conjunction with funding requests.
6. Feb 2010 Progress reports generated in conjunction with funding requests.
7. Feb 2010 Progress reports generated in conjunction with funding requests.

Cost Data

	<u>Arkansas PL (9.7% of Budget)</u>	<u>Oklahoma PL (10% of Budget)</u>
Federal	\$ 23,996	\$ 2,390
Local	<u>5,999</u>	<u>598</u>
Total	\$ 29,995	\$ 2,988

Element 500 Special Regional Projects

*"There's something wonderfully rewarding in being part of an effort that does make a difference."
- Brian O'Connell*

Work Tasks



Arkansas/Oklahoma

1. Prepare the materials to conduct the Second Annual Bi-State Freight Summit. Staff will convene a group of freight stakeholders in July 2009 to discuss possible agenda items for the Summit. The Summit will focus on a select few items in order to capitalize on the time constraints of the program. Staff will invite nationally known experts to be facilitators for the event and will seek additional support from national organizations in addition to the regional sponsors that have indicated their continued support and sponsorship.
(1,2,3,4,5,6,7,8)

Responsible Agency: Bi-State

Roles of Cooperating Agencies: Freight stakeholders will convene, discuss and identify projects to be considered for inclusion in the TIP.

2. Prepare the materials to conduct the Second Annual Bi-State Freight Roundtable. The topic of the Roundtable will be determined during the September Freight Summit by attendees as they identify issues and topics that are priorities to their agency/organization.
(1,2,3,4,5,6,7,8)

Responsible Agency: Bi-State

Roles of Cooperating Agencies: Freight stakeholders will convene, discuss and identify projects to be considered for inclusion in the TIP.

3. Bi-State will provide technical assistance to Bi-State school districts and local governments necessary to coordinate and implement a Safe Routes to School Program (SRS), including assistance in coordinating activities, and making application for funding. Bi-State will also assist in the development of marketing templates necessary for implementation of the projects. *The Bi-State SRS Tool Kit* will be utilized in this activity.
(1,2,3,4,5,6,7,8)

Responsible Agencies: Bi-State, Local School Districts

Roles of Cooperating Agencies: Participation from School Districts and individual schools in preparation of the application and plan for the SRS program.

4. Provide technical assistance to the University of Arkansas-Fort Smith (UAFS) in the development of potential transportation related courses that will be offered through the University's Business College. (1,2,3,4,5,6,7,8)

Responsible Agency: Bi-State

Roles of Cooperating Agencies: UAFS will create and deliver courses, based upon needs analysis it will conduct, through its established product delivery system utilizing its existing facilities, faculty and staff. Bi-State will provide technical support to ensure that course content meets the transportation planning needs of the Bi-State service area.

Participating Parties

Bi-State Staff
AHTD
FHWA
NARC
Fort Smith Transit
Bi-State Member Cities and Counties
Bi-State area School Districts
Arkansas River Connection member organizations
Local Chambers of Commerce
Arkansas River Connection
University of Arkansas-Fort Smith

Products

Copies of monthly progress reports submitted to the AHTD will be forwarded to the ODOT as will the quarterly reports submitted to ODOT be forwarded to AHTD. Copies of resolutions, public hearing notices and meeting minutes will be submitted to AHTD and ODOT within 30 days, or sooner, as required.

Arkansas/ Oklahoma

1. Host the Second Annual Bi-State Freight Summit. Within 30 days after the Summit provide a summary report to the Technical Committee and Policy Board.
2. Host the Second Annual Bi-State Freight Roundtable. Within 30 days after the Summit provide a summary report to the Technical Committee and Policy Board.
3. Delivery of SRS program planning and implementation documentation, including marketing templates and grant applications for Bi State area school(s)/district(s).
4. Delivery of technical assistance to the UAFS to define course content for Transportation Planning class(s) to be offered by UAFS.

Completion Dates

Arkansas/ Oklahoma

1. Sept 2009 Provide summary report 30 days after Summit
2. Apr 2010 Provide summary report 30 days after Roundtable
3. June 2010 and continued into FY 2011

4. June 2010 Progress reports generated in conjunction with funding requests.

Cost Data

	<u>Arkansas PL (26.9% of Budget)</u>	<u>Oklahoma PL (25% of Budget)</u>
Federal	\$ 66,185	\$ 5,975
Local	<u>16,546</u>	<u>1,494</u>
Total	\$ 82,731	\$ 7,469

Statement Regarding Anticipated Out-of-State Travel for Bi-State Staff

Bi-State Staff has determined that the following Elements/Tasks may require out-of-state travel in the successful completion of the work as described in Bi-State's *FY 2010 UPWP*.

These travel estimates, at the time of the preparation of this UPWP, are for informational purposes only.

Element 100

NA

Element 200

Task # 2

Element 300

Tasks # 1, 4, 5, and 7

Element 400

Task # 2, and 7

Element 500

Tasks

Bi-State Staff will, according to the policy imposed on Arkansas Metropolitan Planning Organizations related to out-of-state travel, submit Out-of-State Travel Authorizations to the AHTD for any and all such travel at least one month prior to the proposed travel dates. In addition, the Annual funding agreement between Bi-State and ODOT establishes procedures for out-of-state travel.

Table 1

FY 2010 UPWP: Arkansas PL Funding Summary

Element/% of Program	Description	PL Funds	Local Funds	Total Funds
100 / 9.7%	Data Management and Maintenance	\$ 23,996	\$ 5,999	\$ 29,995
200 / 14.6%	Local Planning Coordination	\$ 35,994	\$ 8,998	\$ 44,992
300 / 39%	2030 Plan Implementation	\$ 95,982	\$ 23,996	\$ 119,978
400 / 9.7%	Bi-State Program Administration	\$ 23,996	\$ 5,999	\$ 29,995
500 / 26.9%	Special Regional Projects	\$ 66,185	\$ 16,546	\$ 82,731
100%	Totals	\$ 246,153	\$ 61,538	\$ 307,691

Table 2

FY 2010 UPWP: Oklahoma PL Funding Summary

Element/% of Program	Description	PL Funds	Local Funds	Total Funds
100 / 10%	Data Management and Maintenance	\$ 2,390	\$ 598	\$ 2,988
200 / 15%	Local Planning Coordination	\$ 3,585	\$ 895	\$ 4,480
300 / 40%	2030 Plan Implementation	\$ 9,560	\$ 2,390	\$ 11,950
400 / 10%	Bi-State Program Administration	\$ 2,390	\$ 598	\$ 2,988
500 / 25%	Special Regional Projects	\$ 5,975	\$ 1,494	\$ 7,469
100%	Totals	\$ 23,900	\$ 5,975	\$ 29,875

Table 3

**FY 2010 Unified Planning Work Program
Funding Summary, AR and OK PL Funds**

Program Elements

Funding	100	200	300	400	500	Total
AHTD PL/FTA	\$ 23,996	\$ 35,994	\$ 95,982	\$ 23,996	\$ 66,185	\$ 246,153
Local	\$ 5,999	\$ 8,998	\$ 23,996	\$ 5,999	\$ 16,546	\$ 61,538
Sub-Total	\$ 29,995	\$ 44,992	\$ 119,978	\$ 29,995	\$ 82,731	\$ 307,691
ODOT PL	\$ 2,390	\$ 3,585	\$ 9,560	\$ 2,390	\$ 5,975	\$ 23,900
Local	\$ 598	\$ 895	\$ 2,390	\$ 598	\$ 1,494	\$ 5,975
Sub-Total	\$ 2,988	\$ 4,480	\$ 11,950	\$ 2,988	\$ 7,469	\$ 29,875
TOTAL	\$ 32,983	\$ 49,472	\$ 131,928	\$ 32,983	\$ 90,200	\$ 337,566

Table 4

**FY 2010 Unified Planning Work Program
Funding Summary, State SPR Funds***

Program Elements

Funding	100	200	300	400	500	Total
SPR/AHTD	\$ 3,300	\$ 4,400	\$ 5,500	\$ 2,200	\$ 6,600	\$ 22,000
SPR/ODOT	\$ 2,310	\$ -0-	\$ 1,650	\$ 660	\$ 1,980	\$ 6,600
TOTAL	\$ 5,610	\$ 4,400	\$ 7,150	\$ 2,860	\$ 8,580	\$ 28,600

* Arkansas and Oklahoma State Planning and Research (SPR) funds are not sub-allocated to the Bi-State MPO for planning functions. The funds shown in Table 4 are those estimated funds that the individual States' Departments of Transportation anticipate expending for their own staff time as it relates to the Bi-State planning program and activities. The Bi-State MPO has no budgetary control over these funds.

National Transportation Factors/FY 2010 UPWP Work Task Matrix

The Safe, Accountable, Flexible, Efficient Transportation Equity Act: A Legacy for Users (SAFETEA-LU) has established eight (8) national factors that all transportation plans and programs must adhere to and promote. The matrices presented below indicate how each of the Work Tasks proposed in the *FY 2010 Bi-State UPWP* addresses these factors. Although the eight (8) national factors have been presented in another section of this document, they are listed again for the purpose of a quick and convenient cross-reference.

Eight National Transportation Factors

- 1. Support the economic vitality of the metropolitan area, especially by enabling global competitiveness, productivity, and efficiency;**
- 2. Increase the safety of the transportation system for motorized and non-motorized users;**
- 3. Increase the security of the transportation system for motorized and non-motorized users;**
- 4. Increase the accessibility and mobility options for people and freight;**
- 5. Protect and enhance the environment, promote energy conservation, improve quality of life, and promote the consistency between transportation improvements and State and local planned growth and economic patterns;**
- 6. Enhance the integration and connectivity of the transportation system, across and between modes for people and freight;**
- 7. Promote efficient system management and operation; and**
- 8. Emphasize the preservation of the existing transportation system.**

FY 2010 UPWP Relationship to the Eight National Transportation Factors

MATRIX

Arkansas

**Work Element/
Task Number**

National Factors

	1	2	3	4	5	6	7	8
100								
1	X		X	X	X	X		X
2	X			X		X		X
3				X	X	X		X
4	X			X	X	X		X
5	X	X	X	X	X	X	X	X
200								
1	X	X	X	X	X	X	X	X
2	X	X	X	X	X	X	X	X
300								
1	X	X	X	X	X	X	X	X
2	X	X	X	X	X	X	X	X
3		X	X		X		X	
4	X	X		X	X	X	X	
5	X	X	X	X	X	X	X	X
6	X	X	X	X	X	X	X	X
7	X	X	X	X	X	X	X	X
400								
1	X	X	X	X	X	X	X	X
2	X	X	X	X	X	X	X	
3	X	X	X	X				X
4	X	X	X	X	X	X	X	X
5	X	X	X	X	X	X	X	X
6	X	X	X	X	X	X	X	X
7	X	X	X	X	X	X	X	X
500								
1	X	X	X	X	X	X	X	X
2	X	X	X	X	X	X	X	X
3	X	X	X	X	X	X	X	X
4	X	X	X	X	X	X	X	X

FY 2010 UPWP Relationship to the Eight National Transportation Factors

MATRIX

Oklahoma

**Work Element/
Task Number**

National Factors

	1	2	3	4	5	6	7	8
100								
1	X			X	X	X		X
2				X	X	X		X
3	X			X	X	X		X
200								
1	X	X	X	X	X	X	X	X
2		X	X	X	X	X	X	X
300								
1	X	X	X	X	X	X	X	X
2	X	X	X	X	X	X	X	X
3	X	X	X	X	X	X	X	X
4	X	X	X	X	X	X	X	X
400								
1	X	X	X	X	X	X	X	X
2	X	X	X	X	X	X	X	
3	X	X	X	X				X
4	X	X	X	X	X	X	X	X
5	X	X	X	X	X	X	X	X
6	X	X	X	X	X	X	X	X
7	X	X	X	X	X	X	X	X
500								
1	X	X	X	X	X	X	X	X
2	X	X	X	X	X	X	X	X
3	X	X	X	X	X	X	X	X
4	X	X	X	X	X	X	X	X

Bi-State Metropolitan Planning Organization

METROPOLITAN TRANSPORTATION PLANNING PROCESS SELF-CERTIFICATION

For Fiscal Year 2010

The Arkansas Highway and Transportation Department, The Oklahoma Department of Transportation and Bi-State, the metropolitan planning organization for the Fort Smith-Van Buren metropolitan area, hereby certify that the transportation planning process is addressing the major issues in the metropolitan planning area and is being conducted in accordance with all applicable requirements of:

- (1) 23 U.S.C. 134 and 135, 49 U.S.C. 5303 and 5304, and this part;
- (2) Title VI of the Civil Rights Act of 1964, as amended (42 U.S.C. 2000d-1) and 49 CFR part 21;
- (3) 49 U.S.C. 5332, prohibiting discrimination on the basis of race, color, creed, national origin, sex, or age in employment or business opportunity;
- (4) Section 1101(b) of the SAFETEA-LU (Pub. L. 109-59) and 49 CFR part 26 regarding the involvement of disadvantaged business enterprises in USDOT funded projects;
- (5) 23 CFR part 230, regarding implementation of an equal employment opportunity program on Federal and Federal aid highway construction contracts;
- (6) The provisions of the Americans with Disabilities Act of 1990 (42 U.S.C. 12101 *et seq.*) and 49 CFR parts 27, 37 and 38;
- (7) In States containing non-attainment and maintenance areas, sections 174 and 176 (c) and (d) of the Clean Air Act, as amended (42 U.S.C. 7504, 7506 (c) and (d)) and 40 CFR part 93;
- (8) The Older Americans Act, as amended (42 U.S.C. 6101), prohibiting discrimination on the basis of age in programs or activities receiving Federal financial assistance;
- (9) Section 324 of title 23 U.S.C., regarding the prohibition of discrimination based on gender; and
- (10) Section 504 of the Rehabilitation Act of 1973 (29 U.S.C. 794) and 49 CFR part 27 regarding discrimination against individuals with disabilities.

BE IT RESOLVED, that Bi-State Metropolitan Planning Organization certifies, in consideration of the requirements listed herein and to the degree appropriate for the size of the area and the complexity of its transportation problems, that the urban transportation planning process is being carried out in conformance with all the applicable federal requirements.

Bi-State Metropolitan Planning Organization

AR Highway and Transportation Department

Signed June 18, 2009

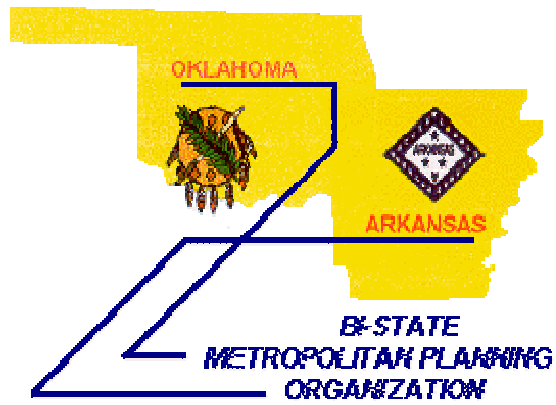
Ken O'Donnell
Bi-State Director

Alan Meadors, Division Head
AHTD Planning and Research Division

OK DEPARTMENT OF TRANSPORTATION

David Streb PE
Engineering Director





“You cannot depend on your eyes when your imagination is out of focus. “

Mark Twain

